

PIPE Conveyor Belt TUBULAR CONVEYOR BELTS.

This type of tubular conveyor belt is applied when there is a need to reduce the dust in the material conveying process to protect the environment.

LUFH-CBS manufactures this type of conveyor belt, meeting the operational requirements in terms of fatigue, rigidity and load capacity. We therefore pay special attention to its manufacturing process in order to offer excellent performance and a high quality product. This belt can be manufactured with fabric carcasses or steel cords.

FLEXOLUFH SIDEWALL CONVEYOR BELTS.

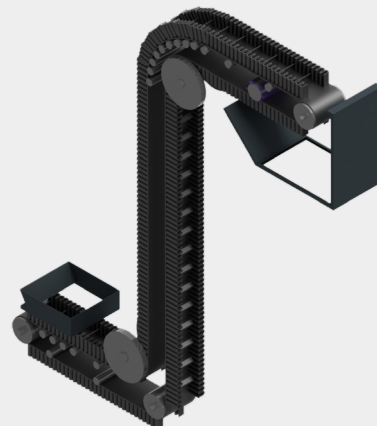
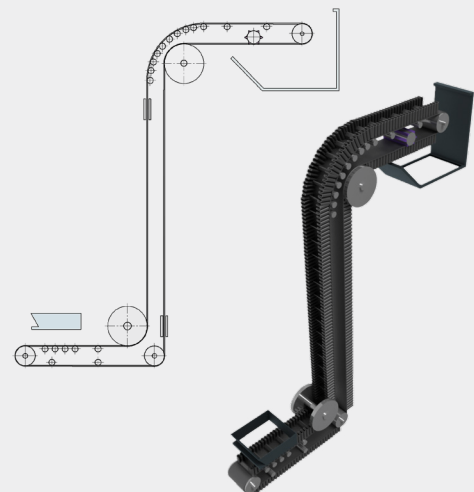
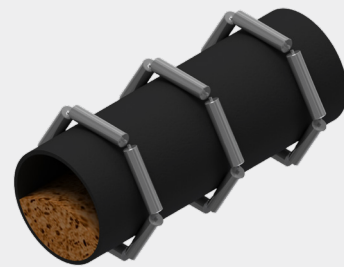
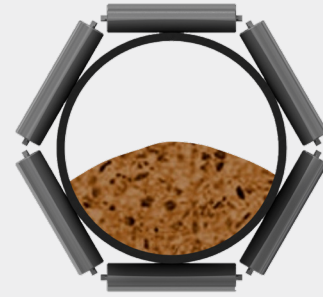
LUFH-CBS offers the latest developments in steep angle cargo transport using the sidewall conveyor system, **FLEXOLUFH**.

Our polyester fabric and steel cords used in LUFH's range of base belts with cross stabilizers have higher stiffness values and very low elongation, with special top and bottom rubber covers, in accordance with the quality required to meet the needs of the application, thus ensuring that they can withstand the high stresses to which an inclined angle conveying is subjected.

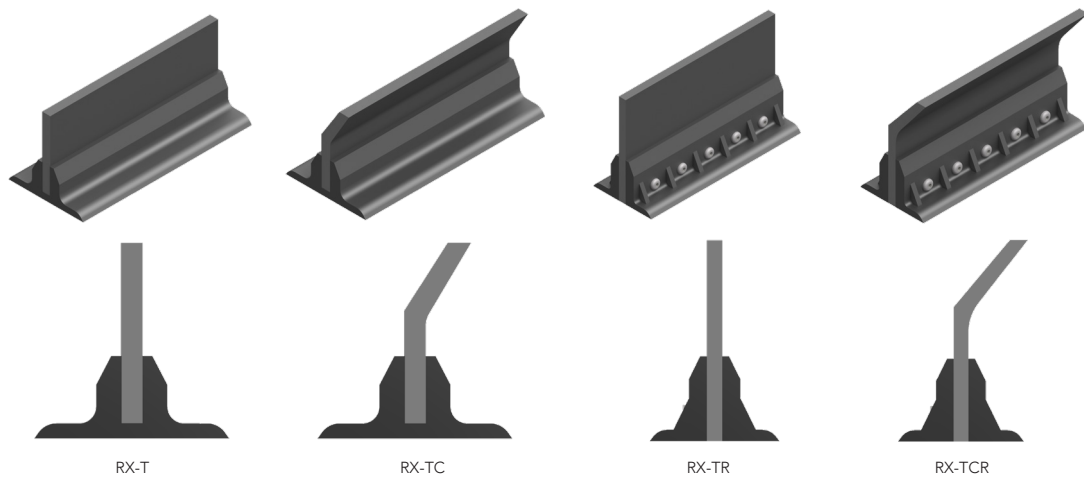
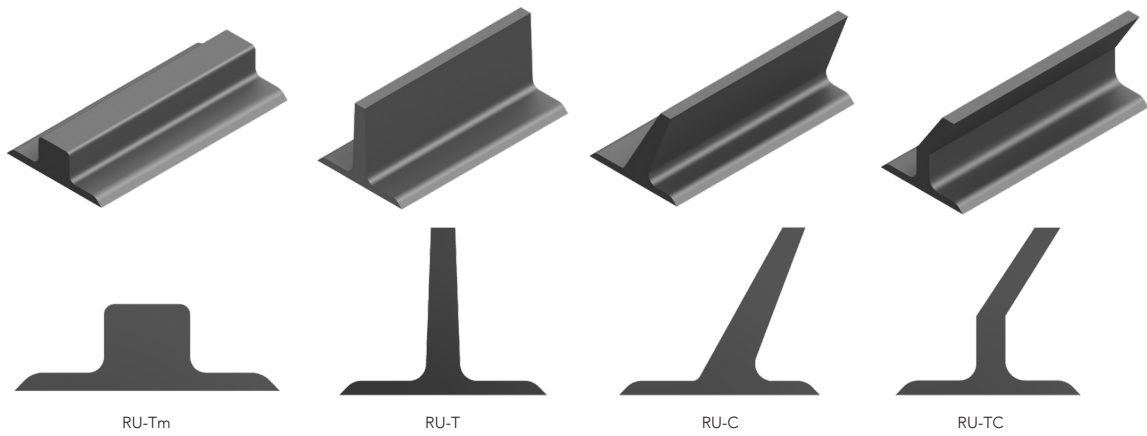
The corrugated sidewalls are produced from a highly elastic, high-strength rubber compound, offering excellent flexibility and maximum bending. The use of diagonal fabric for reinforcement within the sidewalls ensures maximum elongation of the fabric at the bending points and increases tensile strength, extending its life span.

Our assembly lines for corrugated wall panels guarantee maximum product quality. The joint between the corrugated side and the pusher block or cleat to the base belt is either a cold or a hot vulcanized joint, depending on the need and application, ensuring the maximum strength of the joint.

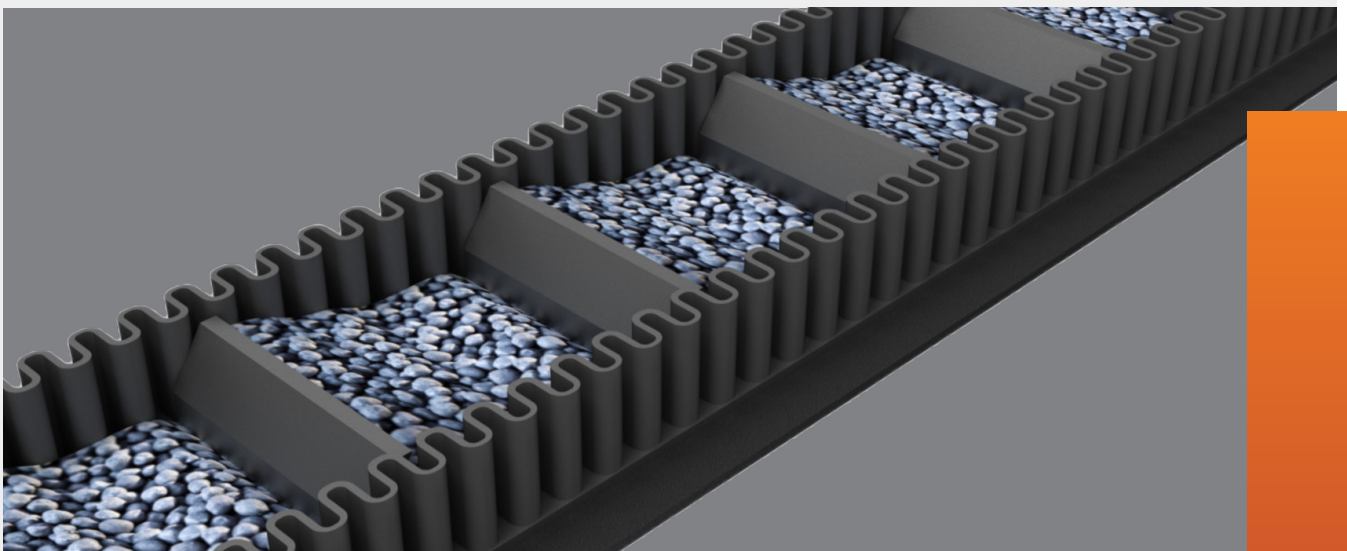
For the right choice according to the needs of the application, please consult our LUFH-CBS Technical Department.



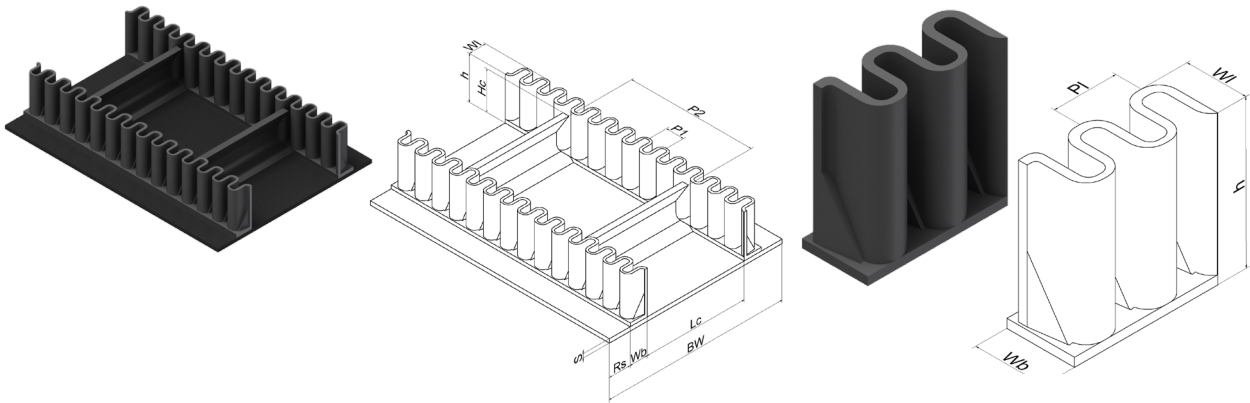
Types of Pusher Blocks or Cleats



* For a suitable choice according to the needs of the application, please consult the LUFH-CBS Technical Department.



Corrugated Sidewall Types



Side Type	h	Wb	WL	PI	Pulley Dia. (mm)	Weight (Kg/m)
LF-S(fr)	40	35	30	30	125	0.6
	60	50	45	40	160	1.6
	80	50	45	40	200	1.8
	100	50	45	40	250	2.2
	120	50	45	40	315	2.7
	120	75	70	60	315	4.0
	160	75	70	60	400	4.7
LF-DS(fr)	200	75	70	60	500	6.5
	250	75	70	60	630	7.5
	280	75	70	60	800	8.6
LF-XDS-fr	300	75	70	60	800	9.3
	300	100	90	75	800	12.5
	400	100	90	75	1000	18.8

Types of Base Belts

TYPE: ECS

This base belt, consisting of two separate textile cross-stabilization (CS) plies as its tensioning carcass, is mainly used for medium duty.

TYPE: ECS+2

This base belt consists of the multiply tension carcass with polyester weft (E) and two (2) fabric cross-stabilization (CS) plies, one located in its load cover and the other in its running cover. Its application is mainly for medium to heavy duty service.

TYPE: ECS-ST+2

This base belt is made up of the multiply tension carcass with polyester weft (E) and two crossed plies of steel cords (ST), one in its load cover and the other in its running cover. Its high lateral stiffness allows this belt to be applied for high lifting heights and wide belts.

TYPE: STCS-ST+2

This base belt is made up of the steel cord tension carcass (ST) and two crossed layers of steel cord (ST), one in its load cover and the other in its running cover. With this type of construction, high tensile strengths can be achieved making the belt ideal for high vertical lifting applications.

*The thickness of the covers are standard designs, these can be supplied with non-standard covers under special orders.